



# BELTRAMI county *est. 1866*

PRST STD  
U.S. POSTAGE PAID  
BEMIDJI, MN  
PERMIT NO. 40

Residential Customer  
ECRWSS EDDM

Minnesota

## News and Highlights

2nd Quarter 2022

[www.co.beltrami.mn.us](http://www.co.beltrami.mn.us)

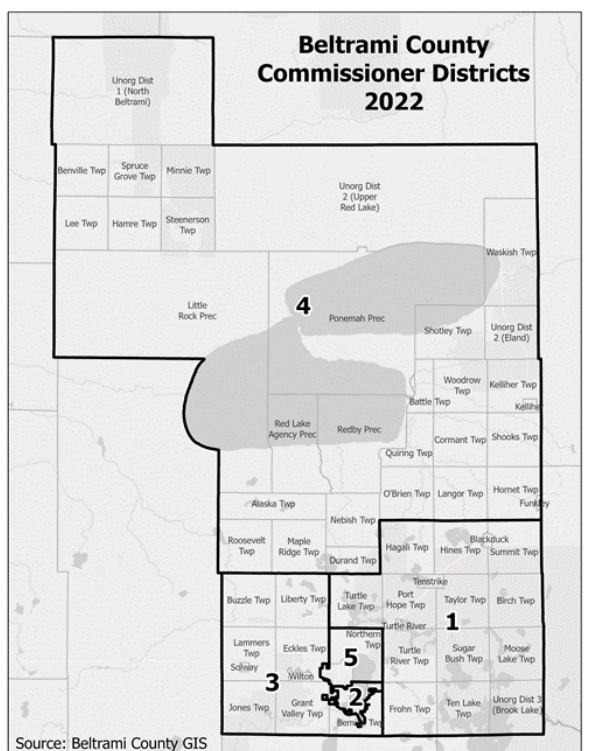
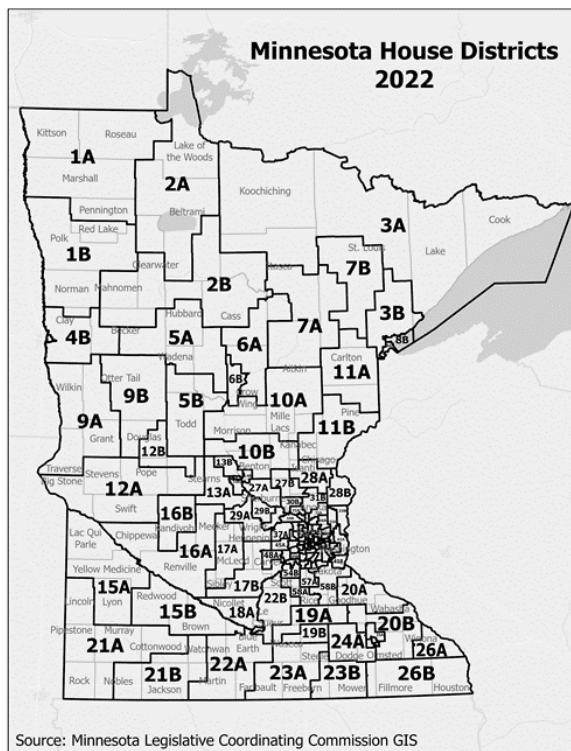
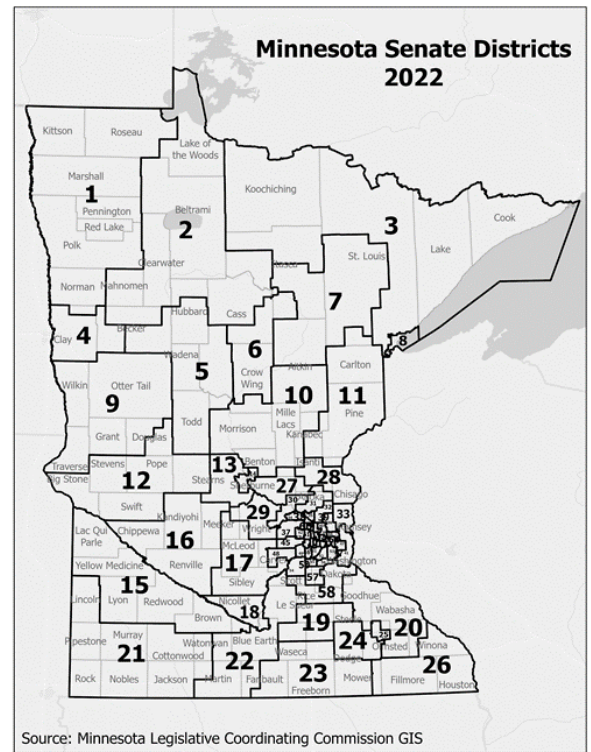
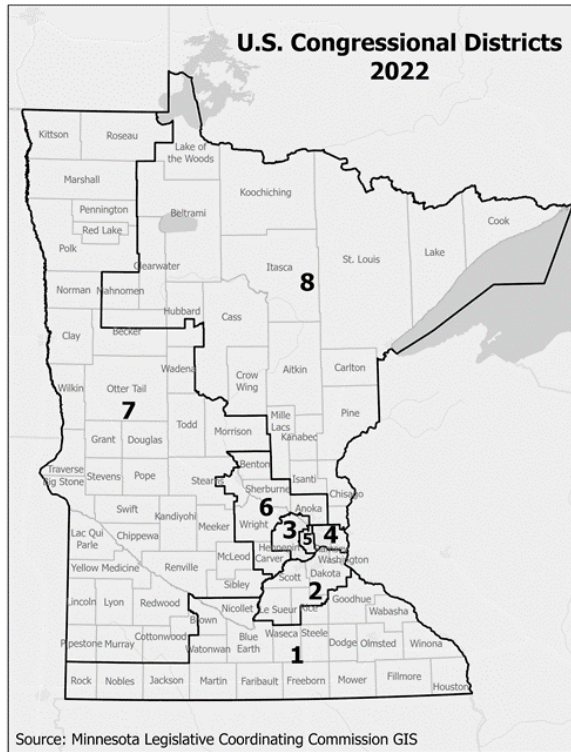
**Beltrami County Mission and Values:** We will strive to be the catalyst to firmly establish a community that promotes healthy families, environmental quality, expanding economic opportunity and a quality of life second to none.

### Election District Boundary Notice

To the voters of Beltrami County, State of Minnesota: Notice is hereby given that the Congressional, Legislative and County Commissioner district boundaries for Beltrami County have been re-established for 2022 and future elections. The table represents all areas of redistricting by precinct. The maps represent recently adopted boundaries. If you have any questions concerning either the district boundaries or your residence in these districts, please contact the Beltrami County Auditor-Treasurer's Office at 218-333-4175.

~Submitted by: Auditor/Treasurer, JoDee Treat

	Congressional District #8	State Senate District #2	State House District #2A	State House District #2B	Beltrami Commissioner District
Alaska Township	X	X	X		4
Battle Township	X	X	X		4
Bemidji City Ward 1	X	X	X		2
Bemidji City Ward 2	X	X	X		5
Bemidji City Ward 3	X	X	X		5
Bemidji City Ward 4	X	X	X		2
Bemidji City Ward 5	X	X	X		2
Bemidji Township	X	X	X		3
Benville Township	X	X	X		4
Birch Township	X	X		X	1
Blackduck City	X	X		X	1
Brook Lake Unorganized #3	X	X		X	1
Buzzle Township	X	X	X		3
Cormant Township	X	X		X	4
Durand Township	X	X	X		4
Eckles Township	X	X	X		3
Frohn Township	X	X		X	1
Funkley City	X	X		X	4
Grant Valley Township	X	X	X		3
Hagali Township	X	X		X	1
Hamre Township	X	X	X		4
Hines Township	X	X		X	1
Hornet Township	X	X		X	4
Jones Township	X	X	X		3
Kelliher City	X	X		X	4
Kelliher Township	X	X		X	4
Lammers Township	X	X	X		3
Langor Township	X	X		X	4
Lee Township	X	X	X		4
Liberty Township	X	X	X		3
Little Rock	X	X	X		4
Maple Ridge Township	X	X	X		4
Minnie Township	X	X	X		4
Moose Lake Township	X	X		X	1
Nebish Township	X	X	X		4
North Beltrami Unorganized #1	X	X	X		4
Northern Township	X	X	X		5
O'Brien Township	X	X		X	4
Ponemah	X	X	X		4
Port Hope Township	X	X		X	1
Quiring Township	X	X	X		4
Redby	X	X	X		4
Red Lake	X	X	X		4
Roosevelt Township	X	X	X		4
Shooks Township	X	X		X	4
Shotley Township	X	X	X		4
Solway City	X	X	X		3
Spruce Grove Township	X	X	X		4
Steenerson Township	X	X	X		4
Sugar Bush Township	X	X		X	1
Summit Township	X	X		X	1
Taylor Township	X	X		X	1
Ten Lake Township	X	X		X	1
Tenstrike City	X	X		X	1
Turtle Lake Township	X	X	X		1
Turtle River City	X	X		X	1
Turtle River Township	X	X		X	1
Upper Red Lake Unorganized #2	X	X	X		4
Waskish Township	X	X	X		4
Wilton City	X	X	X		3
Woodrow Township	X	X		X	4



# Jail Project Update

The Beltrami County Jail Project continues to move forward. The Beltrami County Jail Steering, Programming, and Finance Committees continue to periodically meet. The Jail & Justice Study and Feasibility Assessment has begun.

On February 1, 2022 the Beltrami County Board selected Justice Planners to conduct a the Jail & Justice Study and Feasibility Assessment. Shortly after being chosen, Justice Planners has been collecting data on jail populations, jail bookings, inmate demographics, court proceedings, arrest data, probation data, and mental health data. The data was provided through the Beltrami County Jail records Management System, MN Department of Corrections, State of MN Court System, and other miscellaneous sources.

On February 22, 2022 Justice Planners staff traveled to Bemidji, MN to gather more information and insight. Justice Planners conducted three days of comprehensive in-person interviews with the Jail Project Committees (Steering, Programming, Finance, and Building and Design), Jail Administration, Sheriff Administration, Beltrami County Commissioners, Local County, City, and tribal Law Enforcement agencies, Beltrami County Attorney's Office, City of Bemidji Attorney's Office, Beltrami County Health and Human Services, Beltrami County Judges, Beltrami Court Administration, Beltrami County Public Defenders, Mn Department of Corrections (Probation & Parole), and Beltrami County MIS. Justice Planners also conducted a tour of the Beltrami County Jail to assess the building (structure/infrastructure), design/layout, and functionality.

The Justice Planners consultants are methodically evaluating all the information they have received. They are working on modeling to project Beltrami County's future jail needs and to identify Criminal Justice process efficiencies to reduce the jail capacity needs. The Jail Project Steering Committee has periodically meet with Justice Planners and continues to provide data and information to ensure they have what they need to complete an accurate and detailed report. Justice Planners will complete their study and publish their final report in August 2022. The report will be presented to the Beltrami County Board and used to determine Beltrami County's jail needs and feasible solutions.

The Jail Programming Committee has been meeting to discuss underlying issues and reasons that people get arrested and spending time in the Beltrami County Jail. The Committee is identifying programming solutions to deal with underlying issues like chemical dependency and mental health, to prevent recidivism and improve the individual's quality of life.

The Jail Finance Committee has been meeting to explore all viable options to finance needs and solutions identified by the Jail Needs and Feasibility Study. The financing options will be presented to the Beltrami County Board so they can make an informed decision.

*~Submitted by: Chief Deputy, Jarrett Walton*

## Election Security

In this technology driven society, election integrity and security are more important than ever. There has been an increase in the use of electronic voting equipment in the past 10 years, but the basis for Minnesota's election process is still a paper ballot. All voters in Beltrami County vote on a paper ballot, creating an audit trail that allows for verification of results long after the election is over. As was used most recently in the 2018 Recount of State Representative District 5A.

**Election Equipment:** Beltrami County uses Election Systems & Software Equipment. The portable ES&S Digital Scan 200 is used at Poll sites on Election Day. The DS200 tabulator is at the precinct and allows voters to feed their voted ballot into the machine where it is tabulated and then held in a secure lock box. The ES&S Digital Scan 450 is used at Beltrami County Central Count. The DS450 tabulator is higher speed and able to process the higher volume of absentee ballots. These tabulators have been accredited by the US Election Assistance Commission and certified by the Minnesota Secretary of State.

**Equipment Testing:** Beltrami County conducts an extensive testing of all voting equipment and processes each election to ensure 100% accuracy in the tabulation of ballots. Every ballot style and every tabulator is tested using pre-determined votes for each candidate. The test ballots are fed through the tabulators and recorded on the machine jump drives. The results on the jump drives are encrypted on a stand-alone computer and then uploaded to the Secretary of State's test site. Those results are then proofed against the original test deck. This is the same process that happens on Election Night after polls close.

**Public Accuracy Test:** Beltrami County performs a Public Accuracy Test in the County Boardroom within the two weeks before each election. This test is open to the public and used to demonstrate that the election equipment is tabulating results properly.

**Election Day Tabulation:** Absentee ballots that have been verified against their application and accepted are balanced and fed through the DS450 for tabulation. Results tapes and jump drives are secured for the State upload. Pollsites close at 8pm. Election judges run DS250 results tapes and remove jump drives to be placed in secure packaging for transport. Election judges transport all election machines and supplies to the County Administration Building where their day's work is verified. Jump drives are loaded into a stand-alone computer and the results are encrypted. Encrypted results are saved onto a clean jump drive and uploaded onto the State's Election Night Reporting which pushes the results out to the State Results website. County staff proof those results against machine tapes to ensure accuracy of election results.

**Canvass:** After election results are proofed, they are reviewed by the Canvass Board. Beltrami County's Canvassing Board is made up of two County Commissioners, County Auditor-Treasurer, District Court Administrator, City of Bemidji Representative and a Beltrami County voter. The Canvass Board reviews the process, machine results and State results. Once they are satisfied, they certify the election results as official.

**Post-Election Review:** After canvassing, Beltrami County hand counts the paper ballots of two precincts to audit the results of the machine tabulation. Those two precincts are chosen at random. All election night and absentee ballots are counted by hand to ensure the accuracy of machine results. This audit is held in the Beltrami County Boardroom and open to the public.

These safeguards before, during and after the election ensure that the voting equipment used for elections in Beltrami County is safe, secure and accurate.

*~Submitted by: Auditor-Treasurer, JoDee Treat*

## Opening—Citizen Appointment to the Planning Commission & Board Of Adjustment

Beltrami County has opening for an "at large" position on the 6 member Planning Commission/Board of Adjustment. The Planning Commission assists the County with the formulation of goals and policies for shoreland development, subdivisions, and other environmental policies. The Commission also reviews applications for conditional use permits, subdivision proposals, ordinance amendments, and conducts public hearings for these applications. The Board of Adjustment holds public hearings for variance requests and makes final decisions regarding variance applications and certain appeals. Committee meets the 4th Monday of each month as necessary.

For Complete details, visit the Beltrami County Website at : [www.co.beltrami.mn.us](http://www.co.beltrami.mn.us)

# Clip and Mail

Your opinion and feedback is important to us... tell us how you feel and return this clip to:

Beltrami County Administration

701 Minnesota Ave NW

Bemidji, MN 56601

OR e-mail to: [webmaster@co.beltrami.mn.us](mailto:webmaster@co.beltrami.mn.us)

1. Did you find the information in this Newsletter helpful?

2. What would you like to see in future issues of the Beltrami County News and Highlights?

3. A question I have of the County Board is:

4. A suggestion I have for the County Board is:



**Clip and Send**

## Personal Watercraft Safety

As summer comes upon us, we look forward to warm weather and enjoying time on area lakes. Beltrami County has 170 lakes that are utilized for fishing, skiing, pleasure riding, and jet skiing. It is important to be safe and considerate.

Jet Skis, or Personal Watercraft Craft (PWC), are considered motorboats under the law so they must follow all the regulations that govern other motorboats. People often have questions about Personal Watercraft Laws.

Operators and passengers:

- Must wear a U.S. Coast Guard approved Type I, Minnesota Department of Natural Resources Boat and Water Safety Section II, III or V life jacket.
- Are required to carry a USCG approved fire extinguisher.
- Must travel at slow-no wake speed (5 mph or less) within 150 feet of shore (except when a PWC is launching or landing a water skier by the most direct route to open water), docks, swimmers, swimming rafts, any moored or anchored watercraft or non-motorized watercraft.
- Must have an additional person on board to act as observer while towing a person on water skis or other device. Wide-angle rearview mirrors may be substituted for an observer but they must be factory-installed or specified by the PWC manufacturer.
- Must wear cutoff lanyards that are properly attached to the person, life jacket or clothing of the operator.
- May only operate between 9:30a.m. and one hour before sunset.
- May not:
  1. Chase or harass wildlife.
  2. Operate while facing backward.
  3. Operate in a way that endangers life, limb or property.
  4. Operate a PWC if the spring-loaded throttle mechanism has been removed or tampered with so it interferes with the return-to-idle system.

5. Weave through congested watercraft traffic or jump the wake of another watercraft within 150 feet of the other boat.
6. Travel through emergent or floating vegetation at greater than a slow-no wake speed.

AGE RESTRICTIONS FOR PERSONAL WATERCRAFT: It is unlawful for a PWC owner to permit its operation in violation of the age restrictions.

- Less than 13 --May not operate, even years old with an adult on board.
- 13 years old-- Must have: either someone at least 21 on board, or a watercraft operator's permit and be in continuous visual observation by someone at least 21.
- 14-17 years old-- Must have: either a watercraft operator's permit, or someone at least 21 on board.

USE SOUND JUDGMENT:

- Keep the neighborhood peace and quiet in mind.
- Try not to ride for long periods in a small area. Instead, do your riding out in the lake and away from shore and other boaters.
- Talk to your neighbors. See if your riding bothers them. Sometimes, just taking them out for a short ride will help them understand the fun of PWC riding.
- Don't modify your machine or do anything to make it louder. It's illegal and discourteous to others around the lake.
- Avoid illegal drugs and alcohol. Intoxicated operation of a watercraft is not only illegal, it's also highly dangerous.

Enjoy your time on the water and be safe.

*~Submitted by: Chief Deputy, Jarrett Walton*

## Speed Limits!

Have you ever wondered how speed limits are determined for our County roads? Have you ever thought that there was an inappropriate speed limit posted? Who do you contact?

Speed limits on all roads in Minnesota are set in accordance with Minn. Statute 169.14. There are standard speed limits for all roads: interstate highways, county roads, city streets, and alleyways. The standard limit for County roads is 55 mph. All roads are 55 mph unless posted otherwise. Any speed limit other than 55 mph has to be set based on an engineering and traffic investigation. Speed limits are not arbitrarily set.

An important part of the traffic investigation is a speed study. Speed studies are done because drivers already take into account many factors when choosing a speed. People tend to drive at a speed that they consider to be safe and reasonable, so radar checks are used to determine the 85<sup>th</sup> percentile, the speed that most people are traveling at. This speed is then used in setting a speed limit because studies have shown that traveling faster or slower than that value can increase the chances of being in a crash.

Now that you know how speed limits are set, if you believe that there is an inappropriate speed limit or safety concern you can contact the road authority: State, City, Township or the County. If you do not know who the road authority is you can always contact the County Highway Department.

If you have any questions on speed limits please contact the Beltrami County Highway Department (218) 333-8173.



# From the Beltrami County Assessor's Office

## ... Property Values Skyrocket

This is by far the largest market value change that we have seen in many years, it is more than I have ever experienced and is also surprising to me. By now, all property taxpayers have received their valuation notices for the 2023 value changes due to the current market. The current market on average has gone up 25% to 30% due to inflation, resulting in the large increases in value. As our office went through the appeals process of individuals calling our office and attending meetings one of the main questions is, "how much are my taxes going up?". In almost all cases, they will not increase as much as the value change percentage however it is unknown until the levies are set. To figure out the tax the process starts with the value of property.

**Property Tax Value-**The county assessor determines the estimated market value (EMV) and classification of your property by January 2<sup>nd</sup> of each year. The EMV is adjusted for any deferments, exclusions, or reductions to determine the taxable market value (TMV) of the property.

**Property Classification-**The county assessor classifies property based on its primary use such as homestead, apartment, cabin. Each classification is taxed at a different class rate determined by Minnesota law.

**Budget-**Each year, local governments set a levy (budget) and determine how much money must be raised by property tax revenue to cover their spending after accounting for other revenues. The value and classification of your property are used to determine your share of the levy.

Your property tax bill is composed of both local and state property taxes. Local property taxes help fund local programs and services such as public schools, fire and police protection, streets, libraries and more. State property taxes fund school districts, towns, cities, counties, and other special taxing districts.

Once the levies are set, the tax rate is calculated to determine the amount due for each taxpayer. You are then notified in November of the proposed tax that will be due in 2023. At this time, we cannot determine the exact amount of tax a property owner will owe.

**Also remember to check out the Property Tax Refund-Filed based on income and/or the amount of change in your tax. <https://www.revenue.state.mn.us/property-tax-refund>**

*~Submitted by: County Assessor, Joe Skerik*

# From the Minnesota Department of Revenue

## ... Sales Determine Market Value

### Overview of the Sales Ratio Study

In order to evaluate the accuracy and uniformity of assessments within the state and to ensure compliance with property tax laws, the Minnesota Department of Revenue conducts an annual sales ratio study. The Sales Ratio Study is required by **Minnesota Statute 270.12**. The study measures the relationship between appraised values and actual sale prices, indicating both of the level of assessment (how close appraisals are to market value on an overall basis) and the uniformity of assessment (how close individual ratios are to the median ratio and each other). As a mathematical expression, a sales ratio is the assessor's estimated market value (EMV) of a property divided by its sales price, as seen here:

Sales Ratio = Assessor's Estimated Market Value / Sales Price

The Sales Ratio Study is the culmination of the ongoing process of collecting and verifying sales information. The State of Minnesota requires the reporting of sales information on an electronic Certificate of Real Estate Value (eCRV) in **Minnesota Statute 272.115**. Assessors must verify and review sales information reported through eCRV before it can be used in the study. Sales must meet certain criteria to be included in the study, and these criteria are outlined in this document. These sales are then summarized and analyzed to make generalizations about the market and the assessment for the Sales Ratio Study. The Department of Revenue's Property Tax Data & Analysis Unit, and Property Tax Compliance Officers (PTCOs) perform and review the Sales Ratio Study, working closely with county assessors and staff.



## Beltrami County & The Red Lake Nation Earn National Achievement Award



Beltrami County and Red Lake Nation have been recognized with an Achievement Award from the National Association of Counties (NACo). This award honors innovative, effective county government programs that strengthen services for residents. NACo recognized the multi-jurisdictional solution as an innovative and collaborative answer to addressing tribal child welfare and social service needs. For decades public officials from State, Tribal, Federal, and Local Governments disagreed about who was responsible for the welfare services in The Red Lake Nation, a sovereign tribal government in Northern Minnesota. In 2015, several leaders from all mentioned governments looked towards a new way of thinking to improve services to the Red Lake Nation. This changed thinking led to the Red Lake Tribal Initiative, now named Ombimindwaa Gidinawemaaganinaadog, or Uplifting our Relatives. "The new program model serves Red Lake Nation's cultural needs and holds sovereignty in the highest regard." remarked Beltrami County Health and Human Services Director Becky Secore.

"Our Anishinaabeg practice model has a focus on relationships. This was a key component in the partnership we developed with the County in becoming an American Indian Child Welfare Initiative Tribe. The successful transition of cases from the County to The Red Lake highlights what can be accomplished when we work collectively towards a common goal. Being able to exercise tribal sovereignty in child welfare was very important for Red Lake Nation and we appreciate the support the County provides" said Cheri Goodwin, Executive Director of Ombimindwaa Gidinawemaaganinaadog for Red Lake Nation.

The Red Lake Initiative took effect on Jan. 1, 2021 and has resulted in impressive social and cultural enhancements to The Red Lake Nation. Improved access for tribal members, inclusion of cultural elements and healing facilities, and an expansion of social services are among some of the improvements. On May 10th, a groundbreaking was held to kick-off construction of an expanded cultural and social services facility on the Reservation made possible, in part, by the Red Lake Initiative.

*~Submitted by: County Administrator, Tom Barry*

# Short Term Rental Ordinance Adopted

*effective July 1, 2022*

Short-term rentals such as VRBO and Airbnb have been increasing in numbers over the years and the complaints regarding unregulated rentals have followed. In response to the neighborhood concerns and projected growth of this type of rental use, a new Short-Term Rental Ordinance has been created and ultimately adopted by the County Board of Commissioners. The ordinance goes into effect on July 1, 2022 and all existing Short-Term Rental units that are within the jurisdiction of this ordinance will be required to obtain a use permit within 90 days from July 1.

Some of the details of the ordinance are included here but the full Short-Term Rental Ordinance, permit applications, and other information can be found on the Beltrami County website ([www.co.beltrami.mn.us](http://www.co.beltrami.mn.us)) or by contacting the Environmental Services Department.

The ordinance creates 3 different classes of rental units based on size. Type A units may have up to 3 bedrooms and/or up to a maximum occupancy of 8 people. Type B units exceed the Type A sizing and have a maximum occupancy of up to 12 people. Type C is for 13 or more people. Permits for type A and B rental units will be

issued by the Environmental Services Department and permits for Type C rental units will be considered at a public hearing by the Planning Commission.

Rental units will be limited to homes, cabins, condos or similar buildings and RV's, campers, fish houses, or other structures are not allowed as rental units. One rental unit may be permitted on parcels of land in the shoreland zone. All rental units will be required to enforce quiet hours, provide off-street parking, and have a local property manager who can respond to the rental unit to resolve any issues within 30 minutes. Special events such as weddings are not allowed at short-term rental units unless specifically approved by the Planning Commission.

Please remember that some Cities and Townships may have different rules and regulations regarding short-term rental units. If you would like to learn more about the new Beltrami County Short-Term Rental Ordinance, permit requirements, or if you have any complaints or concerns about a short-term rental unit, please contact Environmental Services at 218-333-4158 or [esd@co.beltrami.mn.us](mailto:esd@co.beltrami.mn.us).  
~Submitted by: Environmental Services Director, Brent Rud

## Recognition of Will Haubrich

### *Beltrami County Economic Assistance Program Manager*

**Will Haubrich was awarded the Patriot Award through the Secretary of Defense, office of Employer Support of the Guard and Reserve.**

Patriot Awards are awarded to individual supervisors for support provided directly to the nominating Service member and his or her family. The Patriot Award reflects the efforts made to support citizen warriors through a wide-range of measures including flexible schedules, time off prior to and after deployment, caring for families, and granting leaves of absence if needed.

Will was nominated for the Patriot Award by Beltrami County Eligibility Specialist and National Guard Service member, Marten Schrage.

Marten's nomination appreciates Will's flexibility, positive communication, and advocacy as well as his teams support while serving in the National Guard during training and while deployed.

*The flexibility given by the agency and Will for Guard weekends and state active duty made me confident I would come back to a welcoming work place after I deployed.*

*I was activated after a drill weekend in 2020 to assist with the civil unrest in Minneapolis and Will kept in touch to make sure everything was going well. Will touched base with me while I was deployed as well. When I got back home he asked if I was coming back to work and wanted to make sure I took the time off needed to transition back into the job.*

*While I was deployed the team put together a care package that really made my time away special. When I returned I was given time to get back into the job and welcomed by everyone, even with decorations. HR worked with me to ensure my benefits started properly. Will and the team worked to make sure I was comfortable with the work and allowed time for me to train to get back up to speed when I returned. I am happy to work for Beltrami County and recommend it to others in the Guard as well.*  
*Marten Schrage*



From left to right: Doug Gunderson, Will Haubrich, Marten Schrage

Thank you Will for the work you do to support and value the employment and military service of members of the National Guard and Reserve.

~Submitted by: Economic Assistance Division Director, Anne Lindseth

## Property Fraud Alert

**According to the FBI, Property and Mortgage Fraud is the fastest growing white-collar crime.**

The Beltrami County Recorder's Office is excited to unveil the Property Fraud Alert initiative that benefit the constituents of Beltrami County. For the past decade, property fraud has been one of the fastest growing white-collar crimes in the United States. All it takes is someone recording a fraudulent record saying they own your home or property for you to become a victim. And it can often take years for this fraudulent document to be discovered, usually during the process of selling your home. Property Fraud Alert is a **free** service that allows home owners to monitor and be notified whenever a document is recorded that matches their details. By being notified early, it can significantly save the victim time and money in fixing the issue. To sign-up just go to [www.propertyfraudalert.com](http://www.propertyfraudalert.com) OR call the hot-line at 800-728-3858.

## 2022 Road Construction Projects

The County Highway Department is preparing for the upcoming construction season. It will be a very busy year with \$15 million in projects happening. The road improvements planned include:

- CSAH 57, Sumac and Hazelwood, from CSAH 21 to 3 miles east and from CSAH 20 to 1 mile north, bituminous surfacing
- CR 305, Wildwood Rd, from CSAH 57 to CSAH 21, bituminous surfacing
- CSAH 12, Power Dam Rd, from CSAH 27 to CSAH 39, bituminous overlay
- CSAH 5, Centerline Rd and Debs Rd, from CSAH 22 to CSAH 32, bituminous resurfacing
- Three Island Rd, from CSAH 23 east, subgrade corrections and gravel surfacing
- CSAH 20, Birchmont Beach Rd, from State Park entrance to CSAH 27, complete reconstruction

The following safety projects are planned for this year:

- Upgrade signs and pavement markings at 9 locations around the county
- Install LED Stop signs at 8 intersections around the county
- Install Chevrons on two curves on CR 402 and CSAH 32
- Upgrade edge line striping on CSAH 12

55 miles of chip seals are planned on the following routes:

- CSAH 5, Centerline Rd, from South Co. line to CSAH 16
- CSAH 8, Roosevelt Rd, from CSAH 50 to CSAH 25
- CSAH 12, Lake Ave, from CSAH 8 to 1<sup>st</sup> St
- CSAH 19, Lake Ave, from Elliot Rd to CSAH 20
- CSAH 23, Everts Rd, from CSAH 32 to TH 1
- CSAH 23, Pioneer Rd, from CSAH 34 to TH CSAH 38
- CSAH 26, Great Divide Rd, from TH 89 to CSAH 15
- CSAH 27, Swenson Rd, from CSAH 8 to CSAH 12
- CSAH 34, Cormant Rd, from CSAH 23 to CSAH 36
- CSAH 36, Corral Rd and Kelliher Rd, from TH 1 to East Co. line
- CSAH 59, Glidden Rd, from CSAH 21 to TH 71



In addition to the construction projects we will have many maintenance projects going on too. One of the larger ones is drainage improvements along CSAH 10, Fredenburg Rd.

Remember to drive safely through work zones. Slow down and pay attention. Please contact the Beltrami County Highway at 218-333-8173 or stop in to see us if you ever have questions or concerns.

## Irvine Avenue Road Project

Major improvements are coming for Irvine Avenue in 2023. The County has started the planning process for the reconstruction of Irvine Ave from 30<sup>th</sup> Street north to Anne Street. Improvements will include a new road section with curb and gutter, City utilities, intersection lighting and a pedestrian/bicyclist trail. In April a public open house was held to take input on the intersection control alternatives being considered for the Irvine/Anne St intersection, which included a signal, roundabout and mini roundabout. To learn more about the project you can visit the County website at <http://www.co.beltrami.mn.us/Departments/Highway/Construction%20Project.html>

~Submitted by: Highway Engineer,  
Bruce Hasbargen



## Road Right-of-Way Obstructions

Please keep in mind that it is illegal to place anything in the road right of way. Examples of illegal objects are political signs, business signs, yard sale signs, fences, retaining walls, or any other item that may hinder the passage over the right of way. Those objects are a safety hazard for drivers and for other right of way users such as ATV's and snowmobiles. Beltrami County Highway Department strives to provide public right-of-ways that are safe and free of unnecessary hazards. Thank you for your cooperation.

Commissioners can be contacted by phone or e-mail:

**District 1 Commissioner Craig Gaasvig**

218-766-9699

cgaasvig@paulbunyan.net

**District 2 Commissioner Reed Olson**

218-766-0383

reed.olson@co.beltrami.mn.us

**District 3 Commissioner Richard Anderson**

218-467-3275

richard@paulbunyan.net

**District 4 Commissioner Tim Sumner**

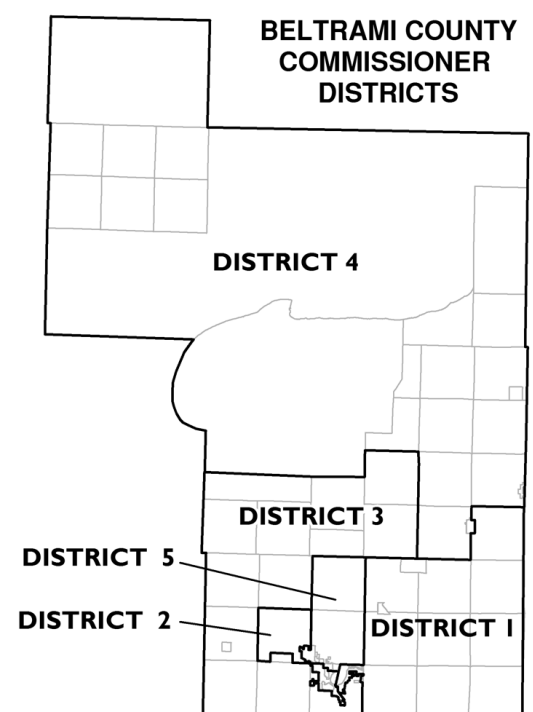
218-407-7589

tsumner15@gmail.com

**District 5 Commissioner Jim Lucachick**

218-586-3523

lukmar@paulbunyan.net



For additional information and detail, visit the County Board of Commissioners at [www.co.beltrami.mn.us/Government/Board\\_of\\_Commissioners.html](http://www.co.beltrami.mn.us/Government/Board_of_Commissioners.html)

## Off Campus Board Meetings

The Beltrami County Board will continue their efforts to hold Off Campus Board Meetings again this summer. Opportunities to attend a County Board Meeting outside of the City of Bemidji office location will be:

**August 16, 2022 at the Northern Town Hall**

**October 4, 2022 at the Eckles Town Hall**

# Jumping Worms in Minnesota and possibly Beltrami County



Jumping Worms can be 1-1/2" to 8" or more in length

## Why should Beltrami County Residents be concerned, and do you know what to look for?

Jumping worms contribute to major forest ecosystem disturbance and are also troublesome for homeowners and gardeners. They negatively impact soil structure and reduce plant growth.

Earthworms, including jumping worms, are ecosystem engineers. By changing soil characteristics, they contribute to a number of other ecosystem shifts that may ultimately increase allergies and Lyme disease, reduce crop and forest productivity, and reduce forest biodiversity.

Like all earthworms, there are no research-based management options, so preventing their introduction and reducing their spread are the only two proven forms of management. Composting sites are starting to no longer accept Dirt or Sod at their sites due to contamination. We don't want our composting site to get contaminated. Jumping worms have been reported as far North in MN as the City of Rice.

## Jumping worms should be reported

Report should include close-up photos of individual worms with a clear view of the location of the clitellum (collar-like ring around the body). You can also include photos of the soil if it has a "coffee-grounds" look.

Report to the Minnesota Department of Natural Resources: [Laura.Vanriper@state.mn.us](mailto:Laura.Vanriper@state.mn.us) or 651-259-5090. Once a report is submitted, do not call the DNR. The agencies and researchers working on jumping worms will get the report and will follow up if necessary. Jumping worms, as well as all worms, should be disposed of in the garbage. Do not release them into the environment.

For more information please visit the following website: <https://extension.umn.edu/identify-invasive-species/jumping-worms>

~Submitted by: Solid Waste Division Director, Brian Olson

## COVID-19 Update

We are working through year three of COVID-19 and have learned a lot along the way. As we learn more, we have watched guidance change, have established new ways of collecting data, have seen booster doses

recommended, and have witnessed the development of new treatment options. There are more tools available now to help prevent COVID-19 from placing strain on communities and healthcare systems than ever before. Community risk levels can help communities and individuals make decisions based on their local situation and needs. These risk levels are based on new COVID-19 hospital admissions, hospital staffing capacity, and total new COVID-19 cases. Community mitigation efforts can change based on these risk levels.

As case numbers have fallen in the past couple of months, we have seen mitigation efforts relaxed. There are still times when it is recommended that people wear masks, such as if you have tested positive or were exposed to someone who has COVID-19. Masking continues to be an important and effective way to prevent the spread of COVID-19. It is important to know that you may always choose to wear a mask if it makes you feel safer, regardless of current risk factors or the CDC COVID-19 community level.

Our partners at Minnesota Department of Health continue to emphasize the importance of getting tested. Locally, there are a variety of ways to get tested for those with symptoms or exposures: our healthcare partners, pharmacies, at home tests, and the community testing site at the Sanford Center are some of these options.

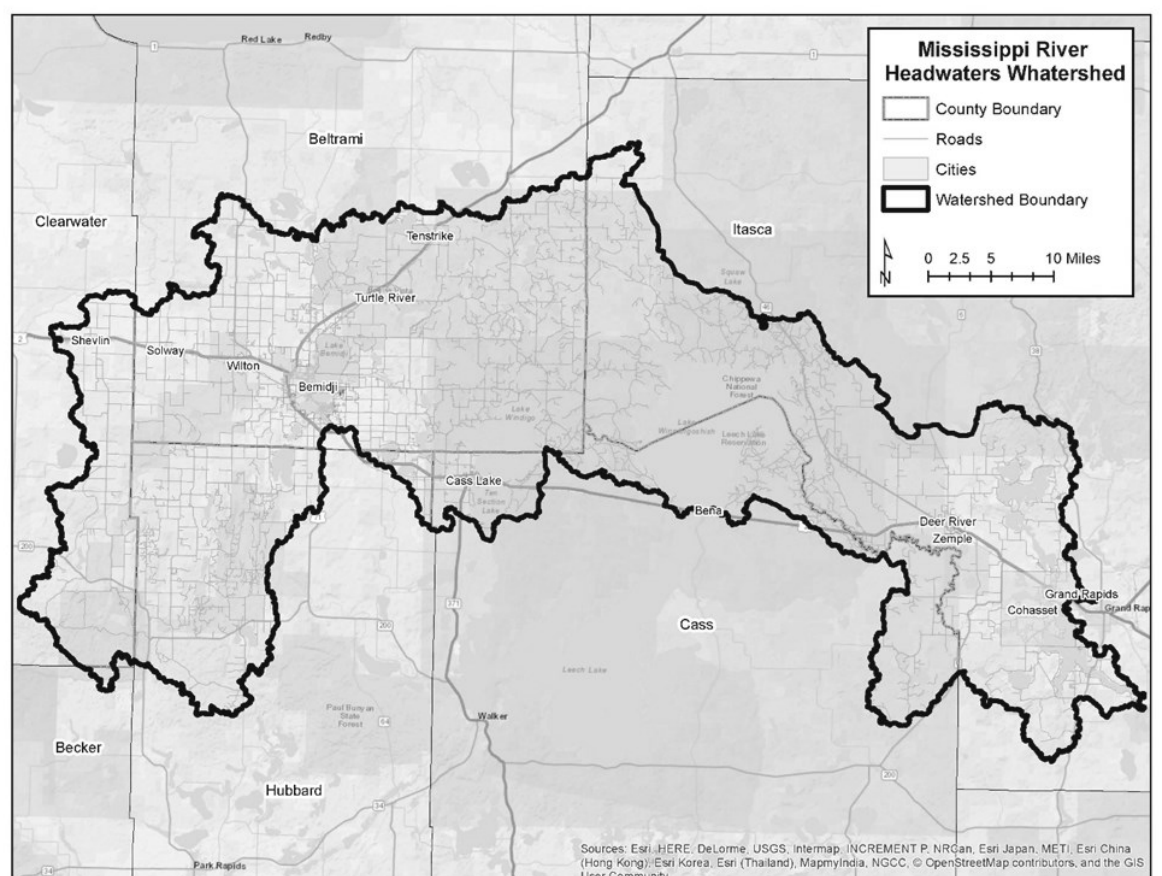
Our public health team continues to be on the frontline of our local COVID-19 efforts. If you have any questions regarding testing, vaccinations, or current guidance and recommendations, please call 218-333-8140.

~Submitted by: Public Health Manager, Megan Heuer

## No-Till Drill

As we head into the growing season, local agriculture producers might consider modifying their seeding operations by utilizing one of Beltrami SWCD's no-till drills. By seeding with a no-till drill, you can consolidate your operation efforts, resulting in less fuel cost and time. As a general rule of thumb, less soil disturbance from a no-till operation can drastically improve your soil health. The no-till drill can also be used to plant cover crops, resulting in further improved soil health.

The no-till and cover crop programs that are available to you depend on the location of your farm. A no-till drill is available to all residents of Beltrami County. If you are located within the Mississippi River Headwaters Watershed (see map), you could also be eligible for cost-share to pay for cover crops. To inquire further, contact the Beltrami SWCD at 218-333-4158. We are happy to help you get into a program that fits your operation.



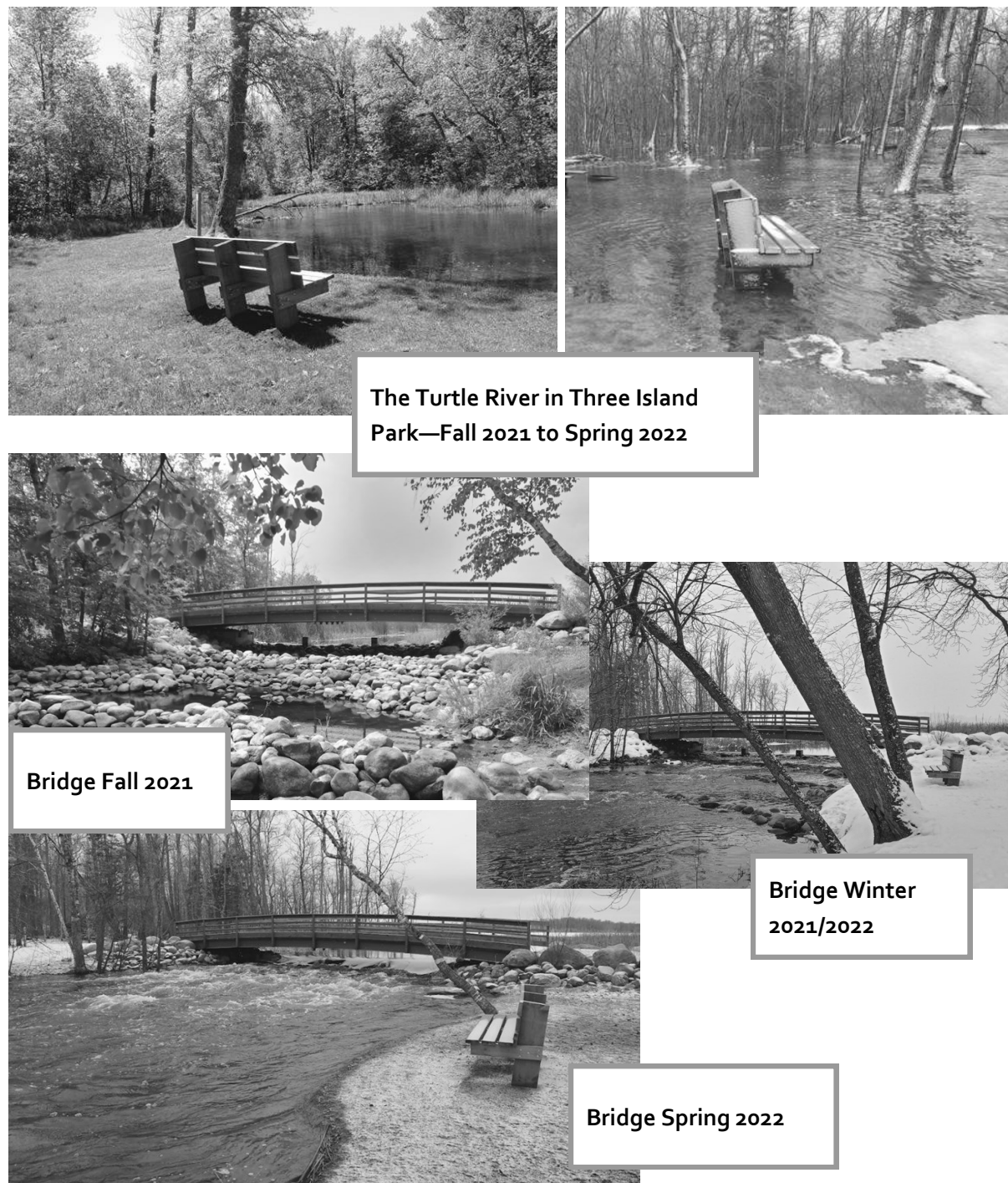
# County Parks and Recreation

The past winter had plenty of snow and many park users appreciated the snowpack, but it was a long winter and everyone is anxious to get outside and start enjoying some summer weather. Now that the weather has finally turned, it is time to get back outdoors.

## What's new this year?

- The most exciting news in our park and recreation world, is we are installing hand pump wells near all our vault toilets. With the federal American Rescue Plan grant, we secured funds for the drilling of five wells - one at Movil Maze Receptions Area, three at Three Island Park, and one at Rognlien Park. These wells meet a great need at our parks by ultimately providing drinking water for park users, a place to wash hands after using the restrooms or recreating, and water for cleaning and maintaining park facilities quicker and more efficiently. Keep your eye out...we should be able to start drilling this summer!
- Another major project at Three Island Park expected to take place as early as this year, is construction on Three Island Rd NE. Working with the Highway Department, funding was obtained to fix several parts of the road that are subject to major frost heaving every spring. During this project, the north portion of the park will be closed while construction is taking place. Notification of the closure dates will be on our web-site once construction is scheduled.
- With the large snowmelt and several inches of rain falling in late April, the county saw major flooding. Three Island Park, Movil Maze Recreation Area, and Rognlien Park were no exceptions. The Turtle River was flowing out of its banks and parts of Rognlien Park was underwater for several weeks. Damage to the roads and other infrastructure was moderate within the parks and will require time to assess and fix. The good news is we are not longer in drought conditions so the water levels should be back to normal this year.
- The orange trail at Three Island Park was widened and reworked last fall to make it friendlier for park users and maintainers. With its designation changed to a multi-use ski trail several years ago, the original design of the trail didn't fit the users' needs anymore. The fixes were made and the new and improved trail can now be enjoyed during any season.

~Submitted by: Recreational Resource Manager, Lori Clark  
 Bridge Fall 2021  
 Bridge Fall 2021



The Turtle River in Three Island Park—Fall 2021 to Spring 2022

Bridge Fall 2021

Bridge Winter 2021/2022

Bridge Spring 2022



[www.co.beltrami.mn.us](http://www.co.beltrami.mn.us)

**Board of Commissioners**

District 1—Craig Gaasvig .....218-766-9699  
 District 2—Reed Olson .....218-766-0383  
 District 3—Richard Anderson .....218-467-3275  
 District 4—Tim Sumner .....218-407-7589  
 District 5—Jim Lucachick .....218-586-3523

**Administration Building**  
 701 Minnesota Ave NW, Bemidji MN 56601

Administrator—Thomas Barry ..... 218- 333-4109  
 Assessor—Joe Skerik .....218-333-4116  
 Auditor/Treasurer—JoDee Treat.....218-333-4175  
 Environmental Services—Brent Rud .....218-333-4158  
 Facilities Manager—Steve Shadrack .....218-333-8475  
 Geographic Info Systems (GIS).Kevin T. 218-333-8457  
 Human Resources—Linda Tran .....218-333-4155  
 License Center .....218-333-4148  
 Mgmt Info Systems (MIS)—Kevin Warne218-333-4151  
 Natural Resource Mgmt—Dick Moore ..218-333-4210  
 Real Estate & Tax Services.....218-333-4138  
 Recorder—Charlene Sturk.....218-333-4170

**Community Service Center**  
 616 America Ave NW, Bemidji MN 56601

Health & Human Services—Director Becky Secore  
 Social Services - Director Jeff Lind .....218-333-4223  
 Economic Assistance  
 Director Anne Lindseth.....218-333-8300  
 Public Health - Director Megan Heuer 218-333-8140  
 Veterans Services Shane Gustafson 218-333-4177

**Law Enforcement Center**  
 613 Minnesota Ave NW, Bemidji MN 56601

Sheriff Ernie Beitel .....218-333-9111  
 Bemidji Police Chief Mike Mastin.....218-333-9111

**Judicial Center**  
 600 Minnesota Ave NW, Bemidji MN 56601

Attorney—David Hanson.....218-333-4219  
 Court Administration.....218-333-4120

**County Jail**  
 626 Minnesota Ave NW, Bemidji MN 56601  
 Main phone number.....218-333-4189

**Highway Department**  
 2491 Adams Ave NW, Bemidji MN 56601

Highway Engineer—Bruce Hasbargen...218-333-8173

**County Extension**  
 7223 Fairgrounds Rd NW, Bemidji MN 56601

Extension Secretary .....218-444-5722

**State Government Contacts**  
 Office Of Governor, Tim Walz.....651-201-3400

Senate  
 Justin Eichorn .....651-296-7079  
 Paul Utke .....651-296-9651

House of Representatives  
 Matt Bliss .....651-296-5516  
 Matthew Grossell .....651-296-4265