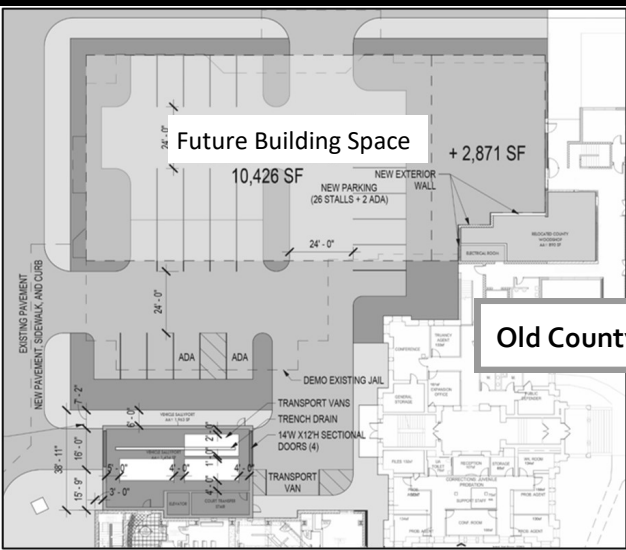




News and Highlights



Chris Muller
Emergency Management Director

Walls of the Past Doors to the Future

PRST STD
U.S. POSTAGE PAID
BEMIDJI, MN
PERMIT NO. 40
Residential Customer
ECRWSS EDDM

The Fate of the Old County Jail

The County’s Jail Design and Operations Team (Team) has spent considerable time evaluating what should be done with the current jail once the new jail is completed and operational. To better understand the condition of the existing building and the financial implications of potential options, the Team commissioned a detailed Facility Condition Assessment (FCA). Following completion of the FCA, the Team worked with architects to develop concept plans and cost estimates for three possible approaches:

Option 1: Fully Remodel and Repurpose the Existing Jail
Remodel the entire building for alternative uses and retain the existing sallyport for inmate transport to and from the Judicial Center.
Estimated Cost: \$9,975,424

Option 2: Partial Removal and Remodel
Demolish a portion of the existing jail and construct a new sallyport near the Judicial Center, leaving only limited space available for repurposing.
Estimated Cost: \$8,602,987

Option 3: Full Removal
Fully demolish the existing jail and build a new sallyport attached to or near the Judicial Center.
Estimated Cost: \$6,006,061

These options were presented to the County Board at the August 19 Work Session. At that time, the Board requested public input and opened a comment period from August 20 through October 15. Seven comments were received, with a majority expressing support for Option 3.

During the October 21 Work Session, the County Board reviewed the study, the Design

and Operation Team’s recommendation, and the public feedback. Board members raised questions about the ongoing operational costs associated with Option 1 – estimated at approximately \$900,000 annually – and expressed concerns about adding nearly 30,000 square feet of new leasable space to a market already experiencing significant vacancies. Following this discussion, the Board voted at its Regular Meeting to demolish the current jail once the new facility was built and operational. The Design and Operations Team was directed to proceed with final design work based on that decision, including plans to convert the cleared site into a parking lot.

The Evolution of the New County Jail

After years of planning and a voter approved local option sales tax to fund the project, physical construction of the jail began in early April 2025 following a ceremonial groundbreaking in September 2024.

The Beltrami County Board of Commissioners were provided an update and virtual tour of the new Beltrami County Jail being constructed on the north side of the Bemidji Industrial Park at their October 21, 2025 Work Session. The tour was originally going to be at the construction site but citing the amount of activity taking place it was determined a virtual tour would be safer and less disruptive to construction progress.

Precast wall panels are set, and the roof panels are in place across the entire facility. The large yellow crane used for placing wall panels has been removed from the site. There are a few locations where the vertical precast panels are not installed to allow the modular (jail) cells to be moved into the building. With the roof in place and complete, it allowed crews to complete necessary duct work.

Considerable construction must be completed before the modular cells are assembled and installed as they will restrict access behind the cells. Each of the three bays where cells will be housed have over two miles of conduit installed to serve the individual cells. Eventually, there will be over thirteen miles of conduit to support the operation of all the cells

With construction work progressing west to east, the administrative, training and lobby areas are being prepared for flooring with a goal of having the building winterized to allow construction to continue during the colder months.

Construction will progress over the next 14-17 months with occupancy anticipated in the first quarter of 2027. The public can review the virtual tour by visiting the Beltrami County Website and navigating to the October 21, 2025 Work Session on YouTube. As of that update, the project is well within the not-to-exceed \$80M approval and is slightly ahead of schedule.



Anne Lindseth
Health and Human Services Director

Beltrami County Housing Study

Sponsored by Greater MN Housing Fund and Sanford Health

Beltrami County serves as a regional hub in Northern Minnesota. As such, the availability of housing at all levels is necessary to support our region’s families and economy. Achieving population and economic growth in Beltrami County will be highly dependent on the availability of suitable housing options that cater to a variety of household types, age groups, and income levels. Greater Minnesota Housing Fund and Sanford Health contracted with Maxfield Research to prepare a Comprehensive Housing Needs Analysis for the Beltrami County area. The analysis offers guidance on how many homes should be built and what types of housing are needed to meet the needs of both current residents and future households in the community. The results of this study were shared on Tuesday, Dec. 2, 2025, when the Greater MN Housing Fund and Sanford Health sponsored the Beltrami County Housing Roundtable. This

event showcased the results of the Beltrami County Housing Study conducted by Maxfield Research. The event also focused on ways to preserve and build more affordable housing across Beltrami County. The content was largely targeted toward housing developers, builders, financial institutions, local governments, advocacy groups, and others with a vested interest in housing development. All those working to increase and improve the housing supply for both renters and homeowners were welcome at the event. The study shows strong demand for housing development across all types. Affordable housing is especially needed, and small-lot development offers a way to build smaller homes on smaller lots while preserving neighborhood character. Collaboration between private businesses and local governments can help make new housing projects possible. Using alternative

construction methods - such as modular building or Structural Insulated Panels (SIPs) can reduce costs. Other options, like accessory dwelling units, Community Land Trusts, and housing cooperatives, could also expand affordable and workforce housing. However, the study notes several challenges, including rising costs for land, materials, and labor. Successful housing development will require a coordinated approach that uses multiple tools and programs to overcome these obstacles. The full study is publicly available on the Beltrami County website <https://www.co.beltrami.mn.us>. Questions regarding the study or those interested in development should reach out to Nate Dorr, Capacity Building Program Manager, Greater MN Housing, ndorr@gmhf.com.



Lori Clark
Recreation Resource Coordinator

Winter Adventures

In Beltrami County Parks



As winter settles in and snow blankets the landscape, Beltrami County transforms into a wonderland of outdoor recreation. Whether you're seeking solitude in the woods or fun with family and friends, there's something for everyone to enjoy this season:

- **Cross-Country Skiing:** Explore the scenic trails at Movil Maze and Three Island Park, where a variety of terrain offers both beauty and challenge. Trails are groomed by the Bemidji Area Cross Country Ski Club through the MN DNR Grant-In-Aid (GIA) program. A MN Ski Pass is required for skiers aged 16 and up and can be purchased online, by phone, or at any location that sells DNR licenses. Stay up to date on grooming and trail conditions with the Skiwise app or website. Trail maps, rules, and more are available at www.co.beltrami.mn.us.
- **Multi-Use Trails:** Looking for variety? The Orange and Yellow Trails at the north trailhead of Three Island Park and the Mountain Bike Trails at Movil Maze are non-motorized, multi-use trails open to walking, snowshoeing, and fat-tire biking. These are the only groomed trails where pets are welcome—so bring your furry friend along!

- **Snowshoeing:** Trek along the scenic 2.3-mile signed snowshoe trail along the Turtle River at Three Island Park, or explore the mountain bike trails at Movil Maze, which are open to snowshoers during the winter months.
- **Ice Fishing:** Bundle up and drop a line at Grant Lake, accessible via Rognlien Park (boat launch and southwest gate), or head to Three Island Park and access the lake from the boat launch area. A peaceful day on the ice might be just what you need this winter.
- **Warm Up & Relax:** After your outdoor adventures, take a break at the shelter buildings at Three Island Park or Movil Maze. These public warming houses offer wood stoves, picnic tables, and a cozy place to gather with family and friends.
- **Snowmobiling:** Craving speed and wide-open trails? Beltrami County boasts hundreds of miles of snowmobile trails, groomed by the local snowmobile clubs through the GIA program. Check trail conditions and maps at the MN DNR website: www.dnr.state.mn.us/snow_depth/index.html

Get outside, embrace the season, and make the most of winter in Beltrami County!

Amy Bowles

Public Health Director/Community Health Services Administrator

The Beltrami County Public Health Team

Hard at work in our community

Public Health Program and Services

The Beltrami County Public Health Division strives to “Prevent, Promote, and Protect” the health of Beltrami County and the surrounding area. While many services are provided at the clinic located at 616 America Ave. NW, the team is equally active in bringing public health services directly into the community with opportunities like:

- Every month there is a WIC clinic held in Blackduck
- Almost every month in 2026 WIC will be hosting a cooking class at the Harmony kitchen
- If you are pregnant or have a child under three you are eligible for nursing and social worker services
- Our home visiting staff can meet with families and individuals at a place convenient for the client
- Once a month Public Health hosts a dental clinic which provides dental screening and cleaning

While our last few articles have focused on our training and response for emergency preparedness, we want to make sure our community is aware of the diversity of programs and services available. Please check out our website for more information, which includes a library for resources and educational videos. <https://www.co.beltrami.mn.us/services/public-health/>.

State Opioid Funding

On October 21, 2025, the Beltrami County Opioid Steering Committee held their annual community and municipality meeting. For those that were unable to attend, there is a virtual viewing option on the Beltrami County YouTube Channel:

<https://www.youtube.com/watch?v=oyARmOznGVw>



On the Horizon for 2026, County residents can expect to see the third Request for Proposal (RFP) application open in January of 2026 providing organizations with the opportunity to apply for funding. In addition, the committee is supporting a Substance Use and Recovery Campaign focused on education, decreasing stigmas, and raising community awareness. This campaign will have an emphasis on the impact substance use has on infants during pregnancy and after delivery. The campaign is called “Funding Hope.” Agencies wishing to request funding should reach out to Amy Bowles and review the advertisement on the Public Health website

https://www.co.beltrami.mn.us/media/pdemarsi/funding-hope-flyer_fall-2025.pdf.

The committee is committed to thoughtful planning and strategic use of the funding to ensure that it is used to make a lasting difference on the catastrophic impact opioids has had and continues to have on all ages, zip codes, races, genders, and socioeconomic statuses of Beltrami County residents. The committee knows that every resident of the County has been impacted by the opioid epidemic and uses discernment with a goal to move the needle on data in a positive direction.

We are grateful for the community presence at the most recent meeting. This included special guests from the Governor’s office and Minnesota House Representative Bidal Duran. The Committee is thankful for the opportunity to serve our county. Please reach out with questions or input that you would like to share using the email address:

amy.bowles@co.beltrami.mn.us.

Curt Anderson

Health & Human Services Economic Assistance Division Director

One Big Beautiful Bill

Affects SNAP and Medicaid Recipients in Beltrami County

H.R. 1 brings several important changes for Beltrami County residents who receive Supplemental Nutrition Assistance Program (SNAP) or Medicaid benefits. The biggest shifts involve new work and reporting requirements for adults ages 19–64. This means more people who receive food or health care assistance through Medical Assistance may need to regularly verify their work, volunteer hours, or other qualifying activities.

For SNAP participants, Minnesota will likely see reduced federal funding for program administration. This could lead to longer processing times or more paperwork when apply-

ing or renewing benefits. States may also face new financial penalties if their payment error rates are over 6% or over a set percentage, which could further affect program operations.

For Medicaid, H.R. 1 adds new reporting steps for people covered under the expansion population. In Minnesota, the expansion population is low-income adults under age 65 who do not have dependent children, a disability, or other circumstances that would qualify them for traditional Medicaid, and whose household income is at or below 138% of the federal poverty level. H.R. 1 also shortens the time coverage can be applied retroactively—from three months down-

Stay Connected

DCYF at dcyf.mn.gov

DHS at mn.gov/dhs

Beltrami County at

co.beltrami.mn.us or 218-333-8300

to one or two months. Low-income adults without children and parents of teens may face a greater risk of losing coverage if deadlines or reporting requirements are missed.

These changes will be rolled out gradually in Minnesota between November 2025 and October 2028. It’s important to stay informed and watch for official updates from Beltrami County Health and Human Services, the Department of Children, Youth, and Families (DCYF), and the Minnesota Department of Human Services (DHS).

Chris Muller
Emergency Management Director

Early Ice Brings Opportunity
—and Risk



Angling has long been a cherished pastime in Minnesota, and northern counties like Beltrami draw thousands of anglers each year. Our region’s colder weather often brings some of the earliest ice-fishing opportunities in the state, and lakes such as Upper Red Lake quickly become busy as soon as the first ice forms. From utility vehicles to fish houses, eager anglers waste no time getting out to their favorite spots. But early-season ice can be unpredictable—and sometimes dangerous.

Understanding the Risks

Not all lakes freeze at the same pace. Smaller lakes with less wave action cool quickly, forming ice sooner, while larger bodies of water can take longer. Even within a single lake, ice thickness can vary dramatically. One area may have several inches of ice, while a short distance away the surface may be dangerously thin. Before a lake fully freezes over, shifting winds can break ice sheets loose and push them away from shore. This has occurred several times on Upper Red Lake in recent years, requiring large-scale emergency responses when anglers suddenly found themselves stranded.

Rescue Efforts and Community Support

Local resorts often play a key role in helping anglers navigate these situations. When additional assistance is needed, public safety teams respond using airboats, canoes, banana boats, cold-water gear, and specialty vehicles such as snowmobiles, ATVs, and even temporary bridges. Beltrami County is fortunate to have many dedicated volunteers who work alongside law enforcement to help those in danger. Their efforts save lives every year—but not every incident ends safely. Staying Safe on the Ice Several lives have been lost in Beltrami County due to thin ice. As we enter another winter season, everyone is encouraged to check ice conditions frequently, stay aware of weather changes, and exercise caution before venturing out on our lakes. Early ice-fishing may be a beloved tradition—but safety must always come first.

Kelliher Fire and Rescue Team



Your Feedback Matters

Visit our website or drop us a line
Your opinion and feedback are important to us! Visit the Beltrami County website at www.co.beltrami.mn.us and send your e-mail to webmaster@co.beltrami.mn.us
Or mail your comments to:
Beltrami County Administration
701 Minnesota Ave. NW, Ste 200
Bemidji, MN 56601
We are interested in knowing:
• Do you find the Newsletter helpful?
• Do you have any suggestions for future issues?
• Do you have any questions or suggestions for the Board of Commissioners?



Ice Safety Tips

- Ice is never 100% safe!
- Wear a life jacket or other buoyant gear.
- Carry ice picks to pull yourself out of the water if you fall through the ice. Lie flat on top of the ice and go back the way you came, that’s probably the strongest ice.
- Recommend ice thickness is 4 inches or more of new clear ice for foot traffic, 9-12 inches for cars, 13-17 inches for a medium size truck and over 30 inches for heavy trucks and ice houses.

Shane Foley
Natural Resource Management Director

Pat Donnay
Bemidji Area Cross Country Ski Club President

Beltrami County and the Bemidji Area Cross Country Ski Club

Ground Breaking by members of the Ski Club



Beltrami County and the Bemidji Area Cross Country Ski Club (BACCSC) have built a long-standing partnership which benefits county residents and visitors alike. With a shared commitment to outdoor recreation, our collaboration is now entering a new chapter with the development of a shared building site. The BACCSC, founded in the early 1980s, is a cornerstone for outdoor recreation in the region. With over 60 miles of groomed trails across multiple parks, including Movil Maze, Three Island Park, and Montebello, the club has helped make northern Minnesota a destination for cross-country skiing. Their energetic volunteer base along with funds from the sales of “The Great Minnesota Ski Pass”, have enabled the club to maintain the extensive trail sys-

tem for all skill levels, and provide a wonderful recreational opportunity during our long winter months. Beltrami County has long recognized the value of the ski club’s contributions to the community and has supported the partnership through land access and trail coordination. Now, collaborating on a new storage facility will further strengthen the club’s ability to serve the public. The planned building, to be located near the County Highway Department, will serve as a year-round operations and storage hub for the Ski Club. It will provide a centralized location to house grooming equipment and provide a workspace for volunteers. The building will be constructed entirely with funds raised by the Ski Club, without the use of any county funds, and will also be

maintained by the club. Beltrami County has supported the project by entering into a 30-year lease agreement with the Ski Club for the use of the county-owned land. The long-term lease provides the stability needed for the club to invest in the facility and is a testament to the trust that has developed between the County and the Club over decades of collaboration. As you watch the project move forward, remember that both Beltrami County and the BACCSC remain committed to their shared vision: wise stewardship of our natural resources and building a strong, active community through outdoor recreation. We hope many of you can get out and enjoy the ski trails this winter, we are lucky to have them.

Ashley Rohr
Beltrami County Local Extension Educator

Beltrami County 4-H Youth are Beyond Ready

Last summer, Beltrami County youth participated in county and state showcases. Two hundred thirty seven youth showcased their learning through 175 livestock projects and 167 general projects at the 2025 Beltrami County Fair. These events provide opportunities for youth to learn by doing, help serve others and lead with their new skills through their favorite projects.

A new initiative launched by National 4-H programs is called Beyond Ready. Beyond Ready is the new 4-H initiative to prepare 10 million youth for work and life by 2030. These efforts strive to encourage youth to be Ready to Learn, Ready to Lead, and Ready to Serve through their 4-H experiences. Beltrami County youth have accomplished many of these functions throughout the 4-H year. For example, the Ru-

ral Ranchers 4-H club decorated and donated May Day baskets to Sanford Health- Windsong in Bemidji. This activity taught our youth about service and empathy as they completed the project. Older youth were instrumental in leading the Cloverbuds (K-2nd grade) through the project, learning about supporting and leadership through the process. The residents enjoyed the visit and the baskets!

Our bold Beyond Ready goal is to share the value of 4-H and community impacts; and hoping others will join our Beltrami County 4-H program! Youth are welcome and encouraged to join any local 4-H clubs, events or programs that are of interest to them. Whether this be through programming events such as our 4-H Project Bowl teams that will begin to form in the



Rural Ranchers 4-H Club

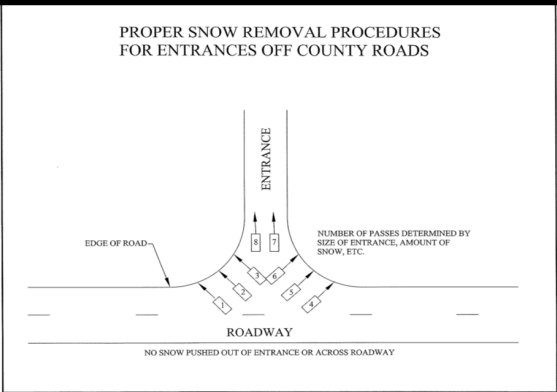
coming months, or curating individual and club projects for next year’s county and state fair. Beltrami County 4-H’ers are looking into the future to expand our program for many years to come. Our local program is also supported by our dedicated group of 101 screened volunteers that help with club meetings, fair preparations and guidance to our young people.

Are you interested in learning more about what 4-H can offer your family? Contact the Beltrami County Extension office to get more information about local clubs and programs and volunteer opportunities including shooting sports, dog training, horse showing, and more! I can be reached at 218-444-4287 or mnext-beltrami@umn.edu.

The Proper Way to Plow a Driveway

The Beltrami County Highway would like to remind county residents that it is unlawful under Minnesota Statutes 160.2715 to plow snow from driveways onto or across public roads. Piles of

snow left on or near the road can freeze into a solid mass or cause drifting, creating hazardous situations for vehicles and snowplows. Accidents and damages caused by snow piles placed in the roadway may result in liability to the property owner. The diagram below demonstrates the proper way to remove snow from driveways.



Ehren Inkel
Director of Operations

On the Radar

Bemidji Regional Airport

Chamber After Hours
The Bemidji Area Chamber of Commerce held its monthly Chamber After Hours event on October 14 at the Bemidji Airport. This monthly gathering, hosted by different businesses and organizations throughout the year, gives attendees a chance to learn more about the host site while connecting with fellow community members.

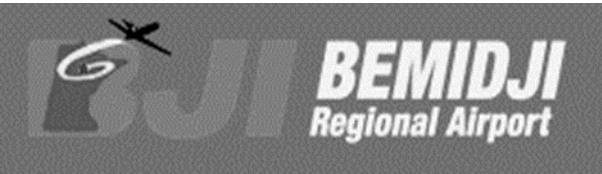
The event at the Bemidji Airport was well attended and offered excellent exposure for the airport and its tenants. As a vital transportation hub, the Bemidji Airport provides essential connectivity that begins right here in our own community. The facility also supports numerous local businesses whose operations enhance community safety, strengthen the regional economy, and create local jobs.

Whether you’re traveling for business, heading out on vacation, or awaiting an important next-day package, the Bemidji Airport is proud to serve the Bemidji area and support the continued growth of our region.

Preparing for Winter at the Bemidji Airport

With fall quickly fading and snow already in the forecast, winter has officially arrived in the Northland. At the Bemidji Airport, this seasonal transition is the result of months of preparation that begins as early as mid-summer. During this time, our team inspects, maintains, and tests equipment to ensure everything is ready for the first snowfall. We also host snow and ice meetings with our tenants to review winter operations, discuss snow-removal priorities, and outline capabilities across the airfield.

A little-known fact about the Bemidji Airport:



despite having a small but dedicated maintenance crew, we remove snow from more than 85 acres of airfield surfaces after every storm—not including parking lots or access roads. During active snow events, our crew often works continuously to clear the runway so commercial flights can operate safely and on time.

As winter ramps up, the Bemidji Airport remains committed to keeping our airfield safe, efficient, and ready to serve the region no matter what the weather brings.

Bemidji Airport Completes 2025 Triennial Emergency Exercise

This September, the Bemidji Airport successfully completed its 2025 Triennial Exercise, a large-scale, live-action emergency drill. The event brought together emergency responders and partner agencies from across the region to participate in a simulated aircraft accident designed to test coordination, communication, and response readiness.

The exercise was well attended and included several complex training components: a live propane-fueled burn to simulate an aircraft fire, a mock terrorist threat involving a fake bomb requiring deactivation, and multiple simulated casualties on the aircraft—many with major medical needs requiring rapid assessment and treatment. These realistic scenarios provide invaluable hands-on experience for all participating agencies.

The Bemidji Airport extends its sincere thanks to every organization and individual who contributed to making the 2025 Triennial Exercise a success. Your dedication helps ensure the safety and preparedness of our entire region.

New Human Resources Director

Jordan Hickman is the new Director of Human Resources for Beltrami County. Jordan has been a resident of Bemidji since 2004. He received a Bachelor of Business



Administration degree with a minor in Political Science from the University of Minnesota Duluth (UMD). Jordan started his career in human resources with St. Louis County in Duluth, MN, where he spent 10 years working as a Personnel Analyst and then Senior Personnel Analyst assigned to the Sheriff’s Department, Arrowhead Regional Corrections, and the Court Administrator’s Office. For the last 21 years, Jordan has served as the Director of Human Resources for Bemidji Area Schools. In that role, he has been responsible for management of all human resources functions. Jordan is also involved as a Certified Shotgun Coach with the Lumberjack Trap Team. Jordan has a strong belief in the value of public service and the positive impact public employees bring to their communities. He is looking forward to working with Beltrami County staff to build individual knowledge and capacity to continue service to the residents of Beltrami County.

Bryce Brittain
Economic Assistance Program Manager

2nd Annual Autumn Job Fair

Hosted by Beltrami County Workforce Impact

On September 16, Beltrami County Workforce Impact proudly hosted its 2nd Annual Autumn Job Fair. This year’s event welcomed 44 employers from across the area, offering valuable networking and employment opportunities to community members.

Approximately 80 attendees registered through the Workforce Impact tent. Building on last year’s momentum, this year’s event was another great success with strong turnout and engagement. We were especially encouraged to see collaboration within our building, as other Beltrami County departments connected with employers to share resources and strengthen support for the programs they serve.

The continued growth of this event reflects our commitment to building bridges between employers, job seekers, and community programs. We look forward to expanding its impact in the years to come.



The Workforce Impact Team

Thank you to our community partners, employers and food/drink truck vendors for their time and support in making this event possible!

David Hart
Commander, Paul Bunyan Drug Task Force

Automated License Plate Reader

New Technology in use by the Paul Bunyan Drug Task Force

Automated License Plate Readers (ALPR) first appeared in the U.S. in 1998 for border security and soon became widely used by law enforcement for locating stolen vehicles and tracking criminal suspects. In 2023, the Paul Bunyan Drug Task Force evaluated ALPR options, and after Beltrami County became designated a High Intensity Drug Trafficking Area (HIDTA) in 2024, selected the American-based Flock Safety system for its effectiveness, ethical standards, and privacy protections.

Flock’s system is built to align with Fourth Amendment principles and avoids capturing personal characteristics—no facial recognition or demographic data. The task force now operates 13 devices, using them solely for public-safety purposes, not immigration or general traffic enforcement. Data is controlled locally, stored only 30 days, and all searches are

permanently logged. The system meets Minnesota ALPR requirements and undergoes biennial audits.

Real-time alerts help officers respond quickly to vehicles tied to crime, and ALPR evidence has already aided investigations. The task force emphasizes transparency, offering public access to policies and statistics through its ALPR Transparency Portal. Its goal is to balance safety, privacy, and accountability while adapting to evolving community needs.

The Paul Bunyan Drug Task Force is committed to ongoing dialogue with our local governments and the public as technology evolves and our communities’ needs change. By prioritizing both safety and privacy, and by keeping our operations transparent, we aim to set a standard for responsible, effective law enforcement in the modern era.



Brian Olson
Public Works—Solid Waste Director/Safety Coordinator

Solid Waste Construction Updates

At the Bemidji Transfer Station

Long-overdue remodel, refurbishment, and modernization work at the Bemidji Transfer Station is nearing completion. In 2020, a design firm was hired to develop plans that would address all needs within Building A including office space, reuse operations, storage, and maintenance areas. A project budget was created, and once funding became available in 2025, construction officially began.

And then June 21 happened. The Derecho that swept through the county caused catastrophic damage countywide, including the transfer station. All four buildings sustained damage, and while two have now been fully repaired, Buildings A (Office/Reuse/Storage/Maintenance) and B (Transfer Station Building) remain under construction. Repairs on these two buildings are expected to be completed in spring 2026. Both structures suffered significant roof, wall, insulation, and interior damage, causing leakage and flooding on top of everything else.

Despite these setbacks, the remodel and enhancement projects for Buildings A and B are nearly finished. The updated facilities will meet all current building codes as well as OSHA flammable-storage standards for waste oil and petroleum products. Improvements include:

- A new covered unloading zone
- A dedicated waste oil collection bin
- New offices and a conference room
- Updated locker rooms and breakroom
- Eyewash stations
- An improved wash-bay drain system
- Upgraded insulation throughout



Users can expect a safer, faster, and more efficient drop-off experience thanks to new signage and an improved traffic-flow process—allowing vehicles to move through the site without needing to exit the line.

At the Blackduck Transfer Station

The County Board had approved a \$700,000 project budget to construct a 40 ft x 40 ft carport/canopy over the existing concrete slab. This upgrade will enhance safety, reduce stormwater impacts, and provide shelter for customers during inclement weather.



At the Demolition Landfill

Following the June 21 storm, the landfill has seen unprecedented activity—receiving more demolition debris in recent months than any prior year. Due to the extremely high volume, the final remaining cell was opened and placed into service in October.

Recycling Sites

The Northdale Oil and Target recycling sites are now permanently closed. A new single-sort recycling location is open at 1917 Fert St NW. Recycling services also remain available at the Bemidji Transfer Station

Coming Soon

Residential Source Separated Organics Program

This program will allow residents to separately collect household food scraps and other compostable materials for proper processing.

Commercial Curbside Source Separated Organics Collection Program

Beltrami and Hubbard counties will soon launch a curbside organics collection program within the city limits of Park Rapids and Bemidji.

Stay tuned on the County website for updates—www.co.beltrami.mn.us

Brent Rud
Environmental Services Director

Keep it Clean Program



Fishing and other pursuits have seen a dramatic increase in winter activity over the past decade. The increase in popularity of ice fishing has grown quickly with technology, better equipment, and wheelhouses, which make staying on the ice for extended periods of time more comfortable. With this increased activity comes more pressure on the natural resources, including an increase in the amount of garbage and waste left on the lake. In an effort to reduce waste left on the ice, Beltrami County & Beltrami SWCD has partnered with the Upper Red Lake Area Association, Red Lake Watershed District, Red Lake Nation, and other Counties and SWCDs to develop and implement the Keep It Clean Program. This program is a public information initiative aimed at educating the public on responsible winter angling waste disposal.

Through a series of grants and donations, this partnership has been able to launch various media campaigns, provide human waste disposal sites at several lake accesses, and post advertising about proper waste disposal. Most recently, our group has secured funding for an additional 2 years of dumpsters to collect human waste on Upper Red Lake, funding for technical assistance for resorts to work on solutions to RV storage tank waste, and more education campaigns.

Before you go ice fishing, please remember to plan ahead and follow these 4 simple steps:

- Make a plan for trash and waste removal before you go
- Don't place garbage & waste on (or under) the ice - It's the LAW
- Make sure your garbage is secure before departing the lake
- Remove all wood blocking, insulation, rubber mats and other materials before you leave

Hopefully you all will make great choices when it comes to cleaning up after yourself and wishing you a safe and memorable winter ice fishing season!

For more information on the Keep It Clean Program or to find out how you can get involved, contact Kali Lawver, AIS Lake Technician, at kali.lawver@co.beltrami.mn.us.

**ICE IS NO PLACE
FOR YOUR GARBAGE & WASTE.
LEGALLY CONTAIN & DISPOSE OF IT.
THANK YOU!**

KEEPITCLEANMN.ORG

Nationwide CodeRED Outage
And Data Breach

Due to a cyberattack and data breach at the vendor level, CodeRED by OnSolve has been decommissioned. Beltrami County utilized CodeRED for over a decade to send out emergency notifications to the community. Redundancies are in place to get information out including the emergency alert system through broadcast television and radio, local media partners, county website and Facebook.

The County is evaluating a replacement emergency notification system and hope to have it operational in the coming weeks. If you receive any notifications from CodeRED representing Beltrami County, terminate the communication. If you created a CodeRED by OnSolve account and used the same username and password on other sites, change your password.

Board of Commissioners	
District 1—Craig Gaasvig	218-766-9699
District 2—Joe Gould	218-259-4342
District 3—Scott Winger	218-556-7589
District 4—Tim Sumner	218-407-7589
District 5—John Carlson	218-766-5010
Administration Building	
701 Minnesota Ave NW Bemidji MN 56601	
Administrator—Thomas Barry	218- 333-4109
Assessor—Kaleb Bessler	218-333-4116
Auditor/Treasurer—JoDee Treat	218-333-4175
Environmental Services	
Brent Rud.....	218-333-4158
Facilities Manager Steve Shadrick	.218-333-8475
Geographic Info Systems (GIS).	
Kevin Trappe	218-333-8457
Human Resources	
Jordan Hickman.....	218-333-4155
License Center.....	218-333-4148
Information Technology (IT)	
Kevin Warne.....	218-333-4151
Natural Resource Management	
Shane Foley	218-333-4210
Real Estate & Tax Services.....	218-333-4138
Recorder—Charlene Sturk.....	218-333-4170
Community Service Center	
616 America Ave NW, Bemidji MN 56601	
Health & Human Services	
Director Anne Lindseth.....	218-333-4195
Social Services Division Director	
Jeff Lind	218-333-4196
Economic Assistance Division Director	
Curt Anderson.....	218-333-4199
Public Health Division Director	
Amy Bowles.....	218-333-8116
Veterans Services Officer	
Shane Gustafson.....	218-333-4192
Law Enforcement Center	
613 Minnesota Ave NW, Bemidji MN 56601	
Sheriff Jason Riggs.....	218-333-9111
Bemidji Police Chief Mike Mastin	
218-333-9111	
Judicial Center	
600 Minnesota Ave NW, Bemidji MN 56601	
Attorney—David Hanson.....	..218-333-4219
Court Administration	
218-888-5060	
County Jail	
626 Minnesota Ave NW, Bemidji MN 56601	
Main phone number	218-333-4189
Public Works Department	
2491 Adams Ave NW, Bemidji MN 56601	
Public Works Director	
Bruce Hasbargen.....	218-333-8173
751 Industrial Park Dr SE	
Solid Waste Director	
Brian Olson	218-333-8187
County Extension	
7223 Fairgrounds Rd NW, Bemidji MN 56601	
Extension Secretary	218-444-5722

