

Management Guidelines for Forest Legacy Areas
Within Three Island County Park (TIP) and Movil Maze (MM) Recreation Area

Documentation and Mapping of Legacy Areas

In order to ensure long term retention of forest legacy areas, it is our expectation that these management criteria and limitations, along with mapped legacy areas will be included in the County's Parks and Recreation management plan. Legacy areas will be permanently designated within the NRM data base.

Forest Legacy Area Desired Conditions/Purposes

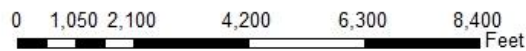
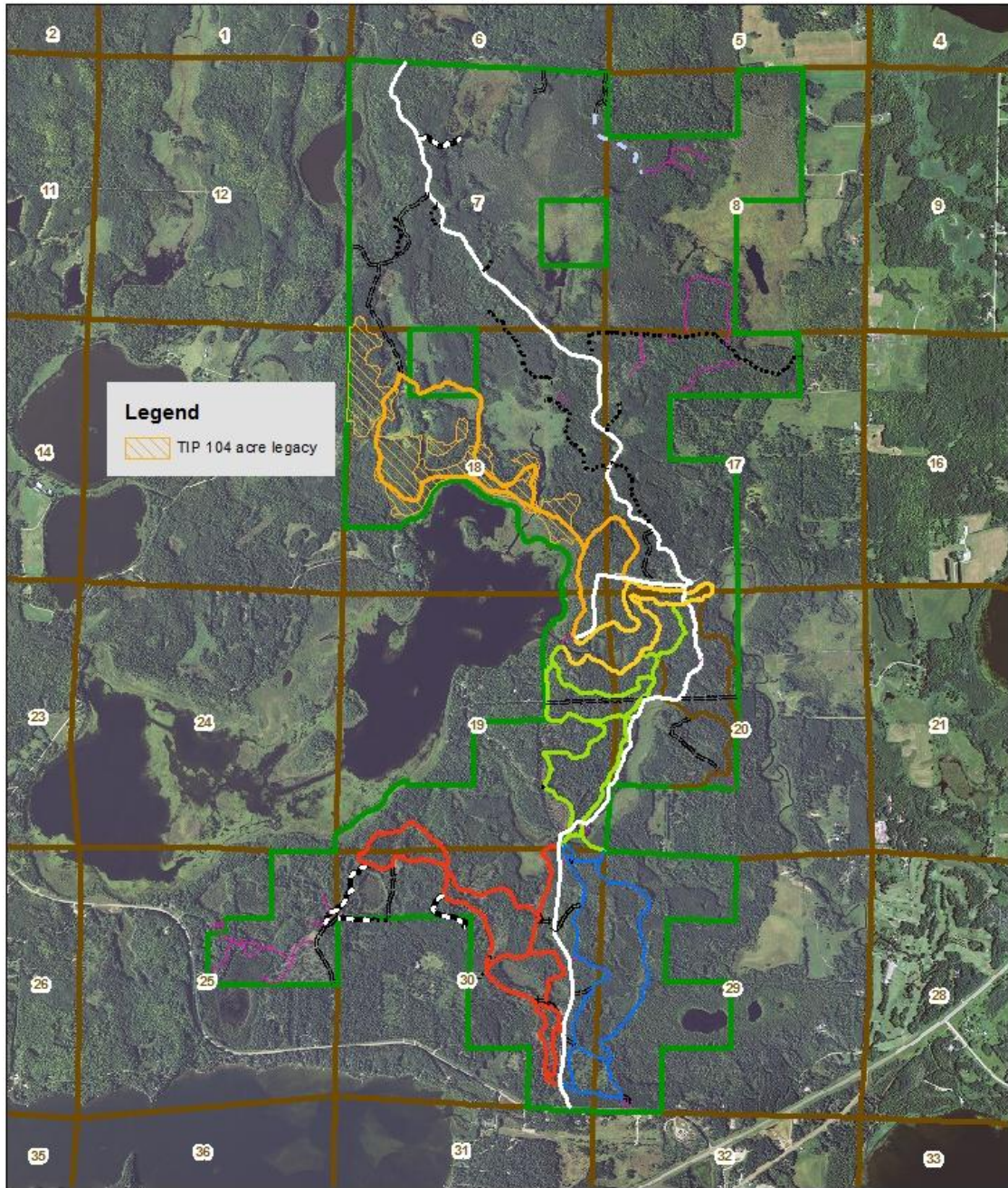
1. Legacy Areas, at the time of initial establishment, generally represent mature to old/old growth forest growth stages for the native plant communities they represent. Centered within the Beltrami County Park and recreation areas, these Legacy stands will provide comparative information and educational opportunities to help the NRM Department make informed decisions regarding the conservation and development of natural resources on other State-in-Trust Conservation lands in the County.
2. Ecological processes prevail with a minimum of human intervention. Land and resource conditions provide for maintenance of relatively undisturbed ecosystems (native plant communities) in the context of areas managed for a variety of recreational or educational activities.
3. Legacies are characterized by vegetation representative of the ecological capability of the area and generally have been less affected by forest management or other human activities than other forest stands within TIP or MM.
4. Despite catastrophic events that may change overstory conditions, legacy areas are maintained in perpetuity. Natural wind events or native insect outbreaks are normal events in the successional history of Minnesota forests.
5. Legacy stands serve as ecological reference areas. Therefore, baseline inventories of plants, animals, or cultural resources should be completed.

Management Limitations within Legacy Areas

- a) No timber harvest or timber stand improvement activities may occur within Legacy Areas. Forest management activities adjacent to designated Legacy areas will be planned to minimize any potential for direct or indirect effects which would be adverse to the conditions and purposes noted above.
- b) The use of herbicides for site preparation or tree release is not allowed.

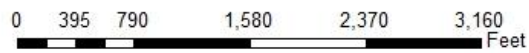
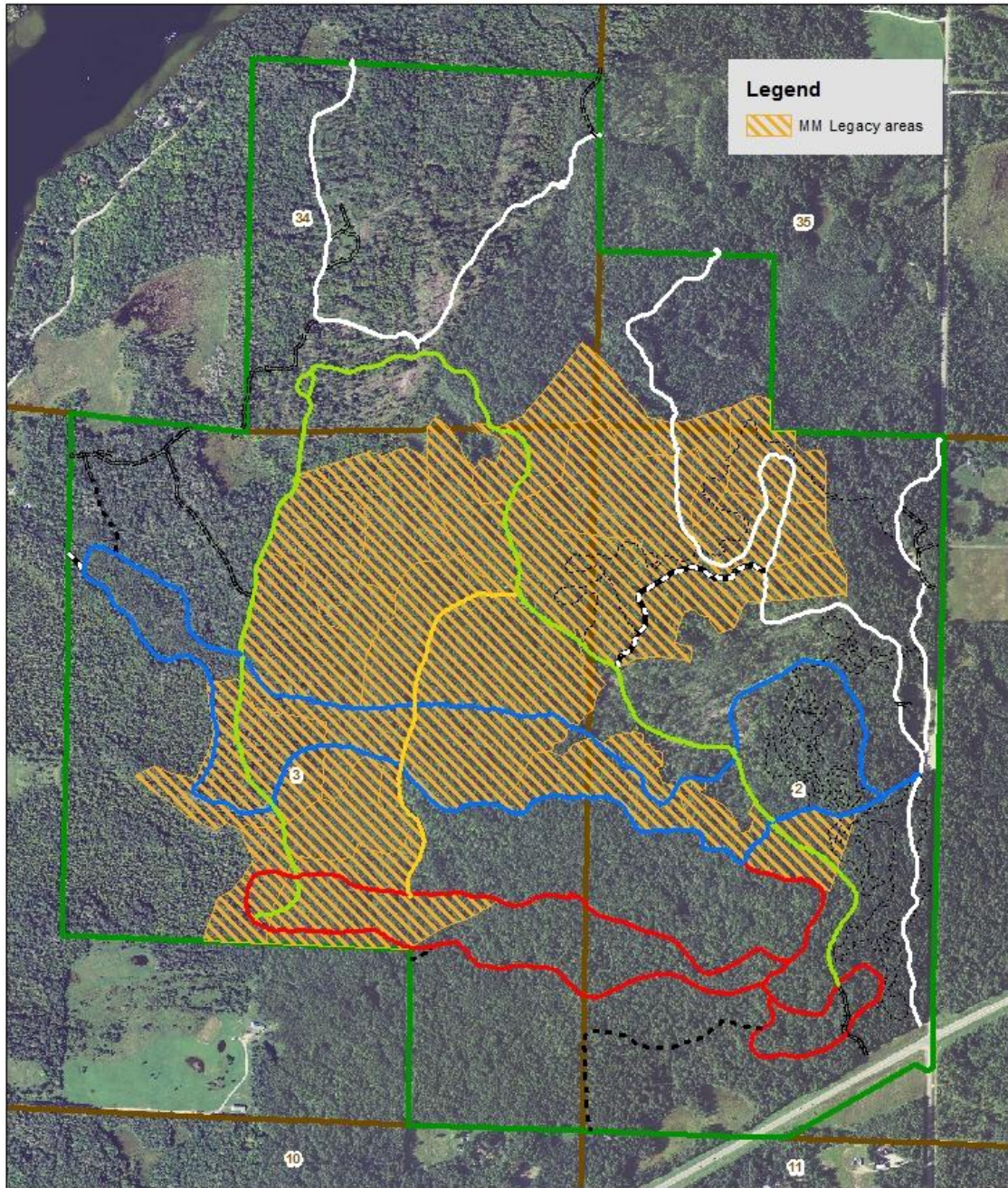
- c) Habitat improvement projects are not normally undertaken within Legacy Areas, but can be used where specifically needed to restore natural ecosystem conditions. Projects such as under-planting white pine or controlling buckthorn or other non-native plant invasive species would be appropriate. Creating wildlife openings or creating snags by tree girdling would be inappropriate.
- d) Occurrence of natural wind events or native insect outbreaks will not prompt management intervention within legacy areas. Treatment of a non-native insect outbreak should be consistent with regional control efforts on similar land bases such as state parks or federal research natural areas.
- e) Recreational uses that threaten or interfere with the desired conditions/purposes of the Legacy Areas are not allowed.
- f) New roads or trails are not permitted, except through an alternative practice review process where County NRM, a recreation user group and/or other interested members of the public determine that a new trail segment and the rehabilitation of the old trail segment would result in a net benefit to environmental conditions in legacy areas. Non-motorized recreational trail uses, which do not clear any trees, are not specifically prohibited, provided the purpose and conditions of the Legacy areas are not adversely affected.
- g) Wildfire suppression is under the jurisdiction of the Minnesota DNR – Division of Forestry. Providing for public and firefighter safety, the Incident Commander would select MIST (Minimal Impact Suppression Tactics) as a preferred option. If heavy equipment is utilized, rehabilitation of the suppression lines would be completed.
- h) Maintenance of recreational trails within Legacy Areas will be to a level that maintains the established use without altering the integrity of the forest canopy of the legacy. Cutting deadfall or windblown trees, maintaining the tread of the trail, and maintaining trail signing are appropriate activities.
- i) Buildings, structures and other improvements are generally not permitted.

Three Island Legacy Map 104 acres



*PTAC Legacy subcommittee recommendation
Approved by Beltrami Board of County Commissioners
October 15, 2013
Beltrami County Recreational Facilities Plan*

Movil Maze Legacy Map 293 acres



*PTAC Legacy subcommittee recommendation
Approved by Beltrami Board of County Commissioners
October 15, 2013
Beltrami County Recreational Facilities Plan*